

—VOLUNTEER MEETINGS—

**ALL-VOLUNTEER MEETING**

**1st Meeting of the Season!**

Thursday, November 10  
9:30-11AM, Porter Hall

There will be a representative from the Skin Cancer Institute who will speak, followed by a presentation on "Interpretation at the Gardens" given by our Butterfly Curator, Elizabeth Willott. There will be coffee and snacks served. Hope to see you all here! ☺

Remember to sign up for **Luminaria Nights!** December 2, 3, and 4 from 4:30 to 8:00PM. The sign-up sheets will be at the All-Volunteer meeting on November 10th and afterwards in the Volunteer Office. If you've never helped at one of these events you don't know what you're missing! It's one of the most magical "holiday" events in town!!

Horticultural Therapy Outreach

Docent Meeting

Wednesday, November 2, 10AM  
Education Classroom

Signature Classes/Proctors/Tour Guides

Thursday, November 10  
Porter Hall, 11AM-Noon

--HORTICULTURAL THERAPY NEWS--



It's great to have all the HT docents and volunteers back at it! Everyone's busy propagating plants for sales or programs and preparing for the Luminaria Nights Sales. We NEED some new pods for our crafting. If any of you have access to relatively fresh yucca pods or devils claw, we'd truly appreciate a donation. You can leave them at my office or I'll come and get them. THANKS!

Juliet, ext. 26

**SAVE THE DATE:**

**For the first time in three years!**

**BIRDING**

**THE SULPHUR SPRINGS VALLEY**

Thursday, February 2, 7:00AM-5:00PM



The Sulphur Springs Valley is a fantastic area for winter birding in southern Arizona. Tens of thousands of Sandhill Cranes, raptors, waterfowl, sparrows, and other birds spend the winter here, feeding in the fields and wetlands. Species we expect to see include Ferruginous Hawk, Common Merganser, Great Horned Owl, and many others. The spectacle of watching thousands of cranes overhead, filling the air with their trumpeting calls is one of the highlights of Arizona birding. Join Jeff Babson of Sky Island Tours for this exciting trip. Bring water, lunch, snacks, and anything else that you normally take into the field. **\$70, \$60 members, (register early, limit of 10).**

**—YOUTH PROGRAMS—**

Call for Youth Education Volunteers: Hello all you *Stupendous, Intrepid, Wonderful* people!

The Youth Education department is still seeking volunteers to deliver onsite and outreach programs for *Desert Plants, Desert People*. This program is tied to the Native Crops program and tells school groups all about area plants and their myriad uses by native tribes. Through our grant funding, we are committed to *delivering 128 programs*. We cannot do it without you! If you are even a little bit interested, please contact:

**Ben Collinworth,**  
Youth Programs Coordinator  
Tucson Botanical Gardens  
education2@tucsonbotanical.org  
(520) 326.9686, ext. 31

## —BUTTERFLY MAGIC—

### Butterfly News

#### Opportunities

If you are interested in being involved in Butterfly Magic, please feel free to contact either Carol Tepper or me at [butterflyexhibit@tucsonbotanical.org](mailto:butterflyexhibit@tucsonbotanical.org) or call at 326-9686, ext. 38. (If you call, please enunciate very clearly and repeat any phone number ... our answering machine is far from perfect.) We will continue to have a few openings each week for working in the exhibit and then there are additional on-going projects that can use volunteers. The volunteer schedule is posted on the door of the Butterfly Office; feel free to write a note to us if you wish to take one of the open shifts.

#### Educational Opportunities

(In addition, please see class schedule elsewhere in this newsletter.)

On the 3<sup>rd</sup> Tuesday of each month, the Southeast Arizona Butterfly Association meets in the Education Classroom from 7PM until around 9PM. There's always a great speaker and superb pictures. Free to the public. Refreshments included.

Prior to the SEABA meeting, from 4:30PM-6PM, I (Elizabeth) will run a Butterfly Basics class. This is designed for potential volunteers and for relatively new butterfly volunteers so they can learn some of the basic biology of the butterflies and a little about our exhibit. Anyone is welcome. Free to volunteers and potential volunteers. Refreshments included. Please feel free to recommend this to friends and acquaintances who may be interested in volunteering with Butterfly Magic.

#### In the Exhibit

Butterfly Magic is now in full swing. We've had butterflies from all regions of the world already. Our focus for November is the Americas. You'll see some butterflies from the same species as grace our Gardens: Queens, Giants, Monarchs. In addition you'll see some wonderful cattlehearts, dusky swallowtails, Blue morphos and, especially, several different varieties of owl butterflies including the Queen Owl, Memnon Owl, Giant Owl, Tamarindi Owlet, and Banded Bamboo.

The owl species tend to rest during the day and fly at dusk and into the night. They sometimes are our nuisance butterflies, when agitated during the day they fly briefly, land on people, and sometimes crawl under overshirts or jackets or into open bags. On the other hand, they are delightful to look at, and their variations are great to investigate.

According to Carrol L. Henderson, "Butterflies, Moths, and Other Invertebrates of Costa Rica," the owl's "eyespot" provides a type of startle strategy for evading predatory birds. When a bird attacks, the eyespot startles the bird, disrupts the attack, and tricks the bird into attacking the eyespot rather than the real body of the butterfly. The butterfly has such huge wings that it can still fly to escape and live to reproduce even if the hindwing is damaged" (p. 80).



#### HARD AT WORK

Here's Susan Fleming at work preparing diet for our Gulf Fritillary caterpillars. Susan recently joined us as a volunteer and enjoys the variety of work she does at the Gardens.



From left to right, top row, then bottom row:  
Queen Owl, open; Queen Owl, closed; Giant Owl, open;  
Tamarindi Owlet, open; Tamarindi Owlet, closed;  
Banded Bamboo, closed.

## Michael Chamberland, Horticulture Director and Manny Cuen, Horticulturist

### Fall Color in the Landscape

Tucson is not known for a show of fall color. Some native trees, such as the cottonwood and Arizona ash, can produce a good display. But they are not used abundantly in our landscapes, and they cannot match the dramatic show of colorful leaves seen in places like New England, the Smoky Mountains, or for that matter, Northern Arizona.

Chinese pistache, *Pistacia chinensis*, native to China, is one of the larger trees that can be seen around Tucson. It can reach a height from 25 to 60 feet with a canopy of near equal size.

Once established it requires low to moderate watering. What makes Chinese pistache stand out in a landscape is in the fall before the leaves drop, the leaves turn yellow and later into the fall, the leaves turn a vibrant scarlet red.

There are also varieties of ash trees of the genus, *Fraxinus*, which are adapted to our desert climate. One variety that will enrich a landscape with fall color is bonita ash, *Fraxinus velutina* 'Bonita'. Bonita is a vigorous grower and once established requires low to moderate watering, reaching heights from 30 to 35 feet with a canopy of equal spread. Bonita ash has a mushroom shaped canopy and its shiny dark green leaves make for good summer shade, and when fall arrives those dark green leaves turn a striking yellow.

Raywood ash, *Fraxinus oxycarpa* 'Raywood', is native to the Mediterranean. It is a fast grower and when established requires low watering. Raywood ash reaches a height of 35 feet with a canopy from 25 to 35 feet wide. The leaves offer filtered shade in the summer, and in the fall change to a breathtaking crimson red.

Although many oak trees are evergreen in the West, there are numerous deciduous oaks that give us fall color. One such tree is the Texas red oak, *Quercus buckleyi*. Texas red oak is a moderate grower requiring low watering. It can reach a height from 30 to 50 feet and spread as wide. The large leaves turn a stunning red.

For a smaller area in a landscape perhaps near a patio, Mexican buckeye, *Ungnadia speciosa*, may be a choice. Although not a true buckeye of the genus, *Aesculus*, Mexican buckeye gets its name from its seed pods resembling ... (con't next column)

... those of the buckeye tree. It is a native of the Chihuahuan desert and can be considered a small tree or a large shrub. Mexican buckeye is multi-trunked and can be planted in full sun to part shade. It is a slow grower, reaching a height from 8 to 12 feet and spreading as wide. Once established it requires low watering. Mexican buckeye is deciduous; however, it is attractive throughout the year. In the spring before leafing out, the branches are covered with clusters of bright pink fragrant flowers, and in the summer the dark green pinnate leaves make a dense canopy, while in the fall the leaves turn an eye-catching golden yellow.

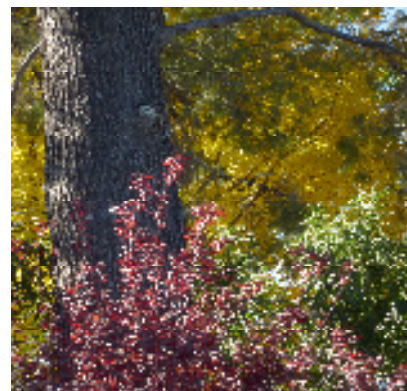
For further selections of fall color trees visit your local nursery.

### Five Gardening Tips for the Fall

1. Plant trees and shrubs.
2. Plant cool season flowers and vegetables.
3. Rake and compost fallen leaves.
4. Deadhead summer perennials.
5. Cutback watering.



*Pistacia chinensis*



Red leaves of *Prunus ceracifera* contrast with other fall colors in the Historical Garden

## — NOVEMBER CLASSES —

### **STARTING A GARDEN IN TUCSON**

**Saturday, November 5, 1-3PM**

Learn how to pick the best garden site; checking soil drainage and pH; preparing the soil and adding amendments; deciding what plants to grow, selecting plant starts or growing from seed; setting plants/seeds in the garden; mulching—what to use and how to use it; watering and what garden maintenance to expect; identifying your garden plants; and what records to keep.

**\$20, \$15 members**

### **WINTER FROST, FREEZES, AND YOUR PLANTS**

**Sunday, November 6, 1-2:30PM**

Cold weather can be devastating for our gardens and landscapes, as we well know after the freeze of 2011. We learned a lot this past winter, and in this class we will share techniques to protect your plants in the future. Learn preventative practices and management methods with Emily Rockey, Curator of Horticulture, to shield plants during periods of cold weather. In addition, we will discuss ways to handle the aftermath of freezing temperatures, and talk a little about the physiology of plants during the winter. Feel free to bring a few photos of your damage if you have some.

**\$17, \$12 members**

### **THE CACTUS FAMILY**

**Wednesday, November 9, 3-5PM**

Not all spiny plants from the desert are cacti, and not all cacti are from the desert. So what is a cactus? What unites this diverse group of plants? We will look at the characteristics of cacti, where they come from, and how to keep them happily growing. Michael Chamberland has studied plants at the University of Connecticut and Arizona State University. With a degree in botany, he has worked both in herbaria and botanical gardens around the U.S. Michael has maintained a special interest in cacti and other succulents. He is currently the Curator of Horticulture at the Tucson Botanical Gardens.

**\$17, \$12 members**

### **ADVANCED CACTUS AND SUCCULENTS**

**Monday, Wednesday and Friday,  
November 14, 16, and 18, 3-5PM**

This three-session class is intended for succulent collectors and serious plant enthusiasts. The introductory class “The Cactus Family” (offered November 9) is suggested as a prerequisite for those having less familiarity with the subject.

Advanced Cacti & Succulents will provide a comprehensive overview of the many kinds of plants grown as part of the succulent hobby. We’ll look at cold hardiness, sun tolerance, landscape use, and propagation. We’ll have a hands-on look at growing succulents in containers, including choice of pots, media and top-dressings. We’ll look at cacti and succulents suited for growing outdoors in the ground, how to plan and build a cactus garden, including the use of rocks and other plants for decoration and microclimates.

**\$50, \$35 members**

### **BUTTERFLY BASICS 3**

**Tuesday, November 15, 4:30-6:30PM**

Join Elizabeth Willott, curator of Butterfly Magic for this basic introduction to butterfly biology. Along with showing some great shots of butterflies of the Gardens and Butterfly Magic, we’ll introduce you to butterfly biology. Includes entrance to Butterfly Magic after-hours.

**\$12, \$7 members**

### **SHOREBIRDS**

**Thursday, November 17, 6-8PM**

Shorebirds are an amazing group of birds, famous for undertaking some of the longest migrations known in animals. Found along coasts, lake shores, and other open habitats, shorebirds present some difficult identification challenges to birders. Join Jeff Babson of Sky Island Tours for this class exploring the great diversity of shorebirds, highlighting their classification and identification.

**\$20, \$15 members**

**MORE CLASSES, NEXT PAGE!**



— NOVEMBER CLASSES (con't) —

**BUTTERFLY SEX (under 18 only admitted with guardian permission)**

**Saturday, November 19, 2:30-4PM**

We'll explore the mating habits of butterflies and how all that good stuff works. Feel free to contact us beforehand if you have any photos or videos you wish to share. Includes entrance to Butterfly Magic after-hours.

**\$14, \$10 members**

**JUST HAVING FUN WITH BUTTERFLIES**

**Saturday, November 26, 2:30-4:00PM**

This class is going to address interesting and intriguing questions, along with some answers, connected with butterflies, their habitat, and anything else butterfly-related that seems to catch our fancy! Includes entrance to Butterfly Magic after-hours.

**FAMILY FRIENDLY!**

**\$14, \$10 members**



*To register for classes by phone with a credit card, or for more information, call 326.9686, ext. 19.*

If you have a question about a class, contact Ron Bridgemon at 326.9686, ext. 39, or email [education1@tucsonbotanical.org](mailto:education1@tucsonbotanical.org)

**IN MEMORIUM 2011**

**Roberta Dunlap**

**Frances Jennings**

**Nancy Ramirez**

We all will miss their presence in our lives here at the Gardens. They will be remembered with great affection by both staff and volunteers.



2150 North Alvernon Way  
Tucson, Arizona 85712